

USB TTL Tool for LDM-020/040

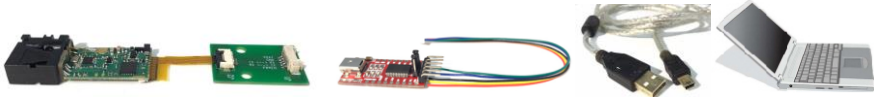
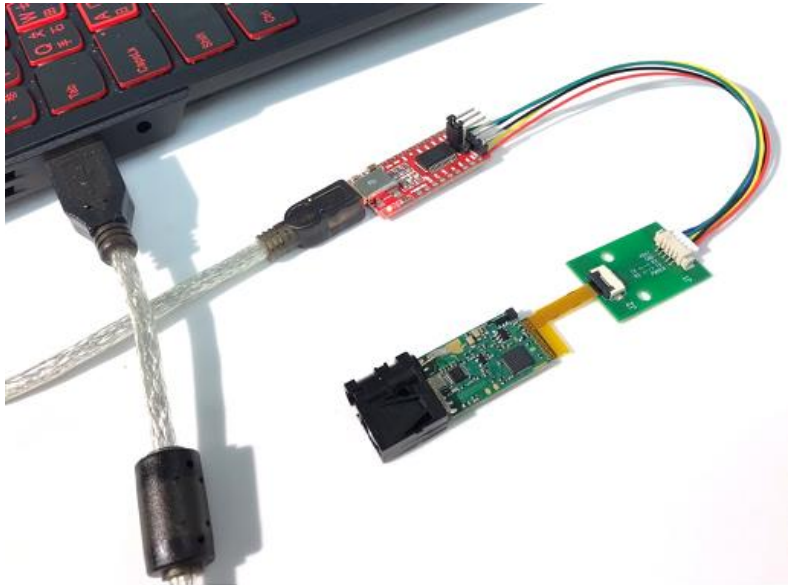
Introduction


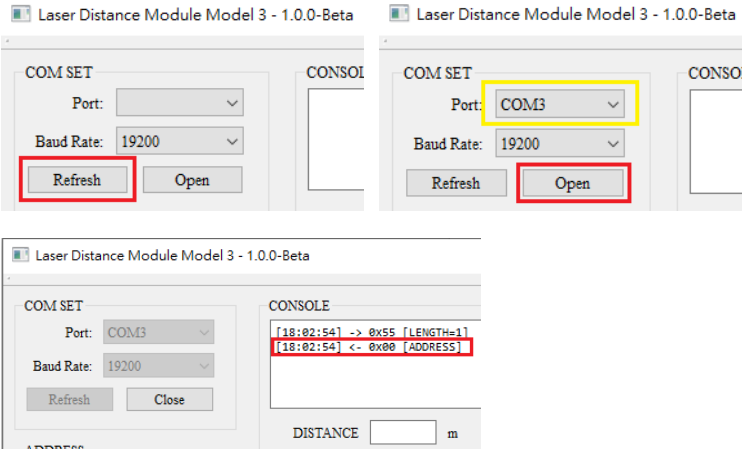
The Laser Distance measuring module works like a Human Interface Device (HID) class USB device. The Software applications in most operating systems can easily read data from such HID class devices without any customized drivers. It is therefore very simple to create your own software to communicate with the Rangefinder Module from Window or Linux. The typical UART output uses a serial RS232 with standard communication transmission protocol, which is the most common configuration for PC serial communications nowadays. The common line speed has a Baud Rate of 19200.



Fig. 1

System Installation Setup (Rs232)

<p>Prepare:</p>	
<p>Step 1.</p>	<p>Connect the RS232 connection to the Rangefinder Module</p> 

<p>Step 2.</p>	<p>Software verification.</p> <p>Open the communication software: Idmm3-1.0.0-beta. (available on our website: www.egismos.com)</p> 
<p>Step 3.</p>	<p>Initiate Communication</p> <p>Click "Refresh" to display the serial port. The baud rate is preset to 19200.</p> <p>Click "Open", the display will show 0x55, which means that the connection has been established.</p> 

Quick communication software

Idmm3-1.0.0

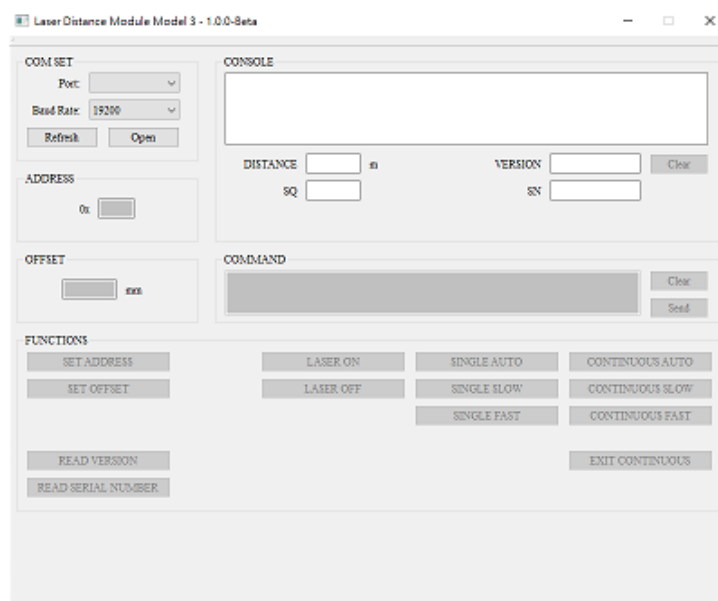


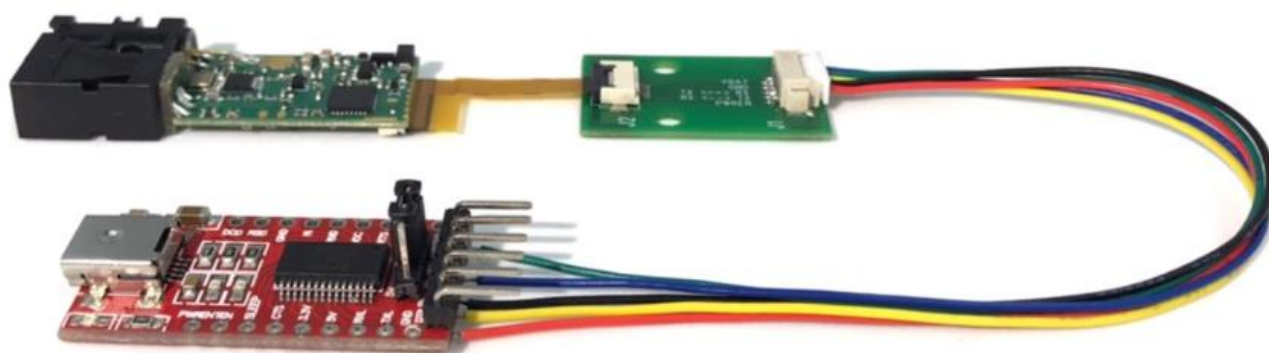
Fig. 2

Basic commands

●"READ VERSION"- Read Software version	●"SINGLE AUTO"- Automatically adjust the speed of single measurements
●"READ SERIAL NUMBER"- Read Module Serial Number	●"SINGLE SLOW"- Slow Single measurement
●"SET ADDRESS"- Set Module address	●"SINGLE FAST"- Fast Single measurement
●"SET OFFSET"- Set Module Measure Offset	●"CONTINUOUS AUTO"- Automatically adjust the speed of continuous measurements
●"R MSTA"- Read System status	●"CONTINUOUS SLOW"-
●"LASER ON"- Laser ON	●"CONTINUOUS FAST"-
●"LASER OFF"- Laser OFF	●"EXIT CONTINUOUS"-Stop continuous measurement

Notice

1. User should always remember to turn OFF the power of the LDK when the measurement is complete, as keeping the power on might reduce the life-time of the Laser and of the light receiving element inside the LDK.
2. Resistors of a few hundred Ohm are preferentially added between the pins UART Rx, UART Tx and the user's MCU in order to limit the voltage discrepancy between the two systems that would lead to current loss.
3. Please make sure the USB output current is sufficient for LDK Start Current.
4. USB TTL Tool images:



RS232 cable for the Rangefinder Model 3